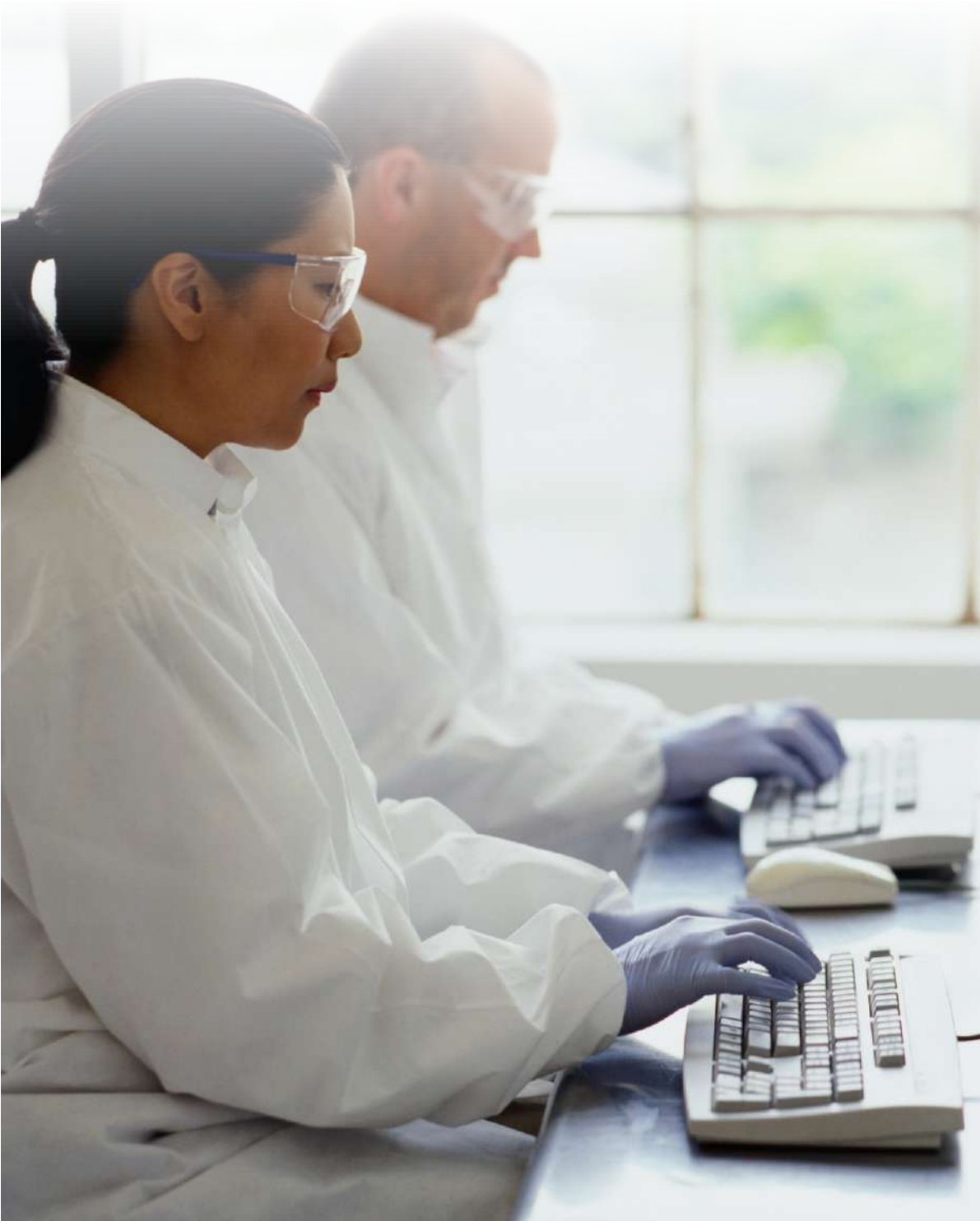




TOTAL DATA MANAGEMENT SOLUTION



SAMPLE MASTER® LIMS

Leveraging open architecture and comprehensive automation for laboratories of any size, Sample Master® accelerates accurate reporting, multiplies productivity, increases operational efficiency, and provides unparalleled data security.

ATLAB.COM



ABOUT SAMPLE MASTER®

Using the latest database technology, Sample Master® is Windows compatible, allowing seamless integration with Microsoft Office and other applications in a variety of network environments.

With the ease and familiarity of point-and-click computing, Sample Master® boasts feature-rich components such as an intuitive user interface, integrated calculations, automated email alerts, *Master Query* functionality, scheduling, and automated reporting. Users can easily modify screen captions to common terminology, run modifiable canned reports, as well as incorporate new screens, report forms, queries, menus, modules, and more.

Sample Master® is modular in design and affords laboratories unparalleled flexibility to choose hardware and software specific to their needs, as well as support expansion as operations grow. The investment can be rapidly implemented and is backed by outstanding customer service, comprehensive training programs, and timely, comprehensive technical support.

SAMPLE MASTER® MODULES

Invest in all or only those you need—as operations grow, the modular design allows for easy expansion!



SAMPLE TRACKING MODULE

This module allows users to quickly and efficiently automate functions such as log-in, generate barcode labels, create quotes, convert to orders, and create invoices that can be electronically exported to numerous accounting packages.

- Generate a series of reports, including Chain of Custody, login report, and sample conditions
- Scan supporting documentation or attach files to an order (PDF, Word, Excel, etc.)
- Create, maintain and email work lists



DATA ENTRY MODULE

Enter data, create QC Batches and Custom Reports, check the Audit Trail, run a Trend Analysis, run the GIS (Geographic Information System) function, set up Unit Conversions, and leverage the *Master Query* function to quickly mine data. Custom Reporting allows you to harness the power of the *Master Query* by defining the audit report criteria and creating an unlimited number of user-definable reports. Using historical data, create Trend Analysis charts by test, department, client, site, or a variety of criteria. Using the LIMS GIS function, users can plot sampling locations and test result values.



SAMPLE SCHEDULING MODULE

Automatically pre-log samples for routine collection. Samples can be automatically scheduled as daily, weekly, monthly, quarterly, semi-annually, annually, or by study. Coupled with a calendar printout and the ability to reschedule for holidays, this ensures that sampling events will not be missed. Sample collection kits can be prepared in advance, with routing sheets, labeled bottles, and email alerts for the field collection team.

SAMPLE MASTER® FEATURES

Configurable System & Real-time Alerts
Dashboard & Web Portal
Barcoding & Audit Trail
Automated Fax & Email
Calculations & Limit Checking
Internal Chain of Custody
ELN & Instrument Integration
Flexible Reporting & Chemical Inventory
CRM & QA/QC
Scheduling & EDDs
Project & Resource Management
Regulatory Compliance

DETAILED ANALYSIS
REQUIREMENTS

LIMS
CONFIGURATION

MAINTENANCE
& SUPPORT

IMPLEMENTATION
& TRAINING

VERIFICATION
(QUALITY
ASSURANCE &
TESTING)

CONTINUAL IMPROVEMENTS
SYSTEM ENHANCEMENTS & UPGRADES



QA/QC MODULE

The integrated QA/QC module allows users to graph results and create control charts. Users can configure tests to include QC, matrix spikes, blanks, duplicates, surrogates, matrix spike duplicates, and many others. Control limits may be entered manually or calculated from historical limits. You can easily select the data to plot using the *Master Query* such as test, sample number, method, site, analyst, etc.



ELECTRONIC DATA TRANSFER MODULE

Transfer data electronically from the instrument to the LIMS. Sample Master® will accept the instrument output files and parse data in the required input format. Using the LIMS Task Manager, Sample Master® will scan specific directories at user-definable times seeking files to import, or the exact data to be imported can be specified in the case of multiple runs or dilutions for a sample. Users can leverage the EDD (Electronic Data Deliverable) designer to quickly create EDDs.



CHEMICAL INVENTORY MODULE

Manage your chemical and reagent inventory effortlessly! This module allows you to track supplies and vendors and provides the ability to assign prices to supplies, track lot numbers, and assign expiration dates. By automating back office information, better purchasing decisions can be made and the laboratory will run more efficiently. The report dashboard will provide reports that can be automatically emailed to alert users of supplies that are approaching expiration date or supplies that are reaching critical limits so they can be re-ordered.



RESOURCE MANAGEMENT MODULE

Set up instrument calibration schedules and personnel certificate renewal alerts and you'll always be within regulatory compliance. If an instrument calibration is out-of-date or an employee has an expired training certificate, permission to perform a specific task will not be allowed. Manage instrument maintenance, calibration and repair records to ensure that all instruments are within control.



CUSTOMER RELATIONSHIP MANAGEMENT MODULE

Customer Relationship Management (CRM) is vital to laboratory success; this module offers an easy and affordable way to effectively support system deviations through an organized method of tracking, monitoring, and rapidly resolving potential problems. The CRM module will facilitate the execution of corrective and preventative actions to ensure regulatory compliance. Laboratories with a focus on CRM have improved laboratory processes, higher marks in customer satisfaction, trust, and loyalty, and have fostered long-term business relationships.



TIME TRACKING MODULE

The Time Tracking module is ideal for managing employees and tracking time expended on laboratory tasks and projects. Create standalone projects or multiple projects for a single client, and calculate billable hours through completion.



LIMS MAINTENANCE MODULE

The LIMS Maintenance module is comprised of the entire laboratory's static information that is configured and maintained by the database administrator. This is where the Sample Master® setup information and default settings are found. Information such as defaults, number format, QC batch ID, employees, permissions, tests, methods, limits, prices, departments, ID formats, reports, and many other settings are stored and updated. This module allows the administrator to easily configure the LIMS to conform to the workflows and business rules of the laboratory.



Result Point® is a secure web portal that allows clients to access their data 24/7; view status and results, check limits, view or print reports in PDF, Excel, or other common file formats. Users can also remotely log in samples that will be shipped to the laboratory.

MINIMUM TECHNICAL SPECIFICATIONS

CLIENT MINIMUM REQUIREMENTS: Windows XP or higher, Pentium 4 2.0 Ghz, 2 GB of RAM or higher, 100 MB Disk Space, Microsoft Access 2010 (32-bit) runtime engine, Microsoft Access, Crystal, Excel, or any standard reporting tool that is desired.

SERVER MINIMUM REQUIREMENTS: Windows Server 2003 higher, Pentium 4, 3.0 GHz, 2 GB of RAM or higher, 1 GB available hard disk space. Recommendations are general and will vary by installation. Microsoft SQL Server 2008 and SQL Express* as the database engines.

*Sample Master® Classic Only



SALES AND TECH SUPPORT

**TOLL-FREE
TELEPHONE SUPPORT**

**DEDICATED
ACCOUNT MANAGER**

**WHITE PAPERS &
KNOWLEDGE BASE**

USER FORUM

**FREE PRODUCT
UPGRADES**

**REGULAR USER
GROUP MEETINGS**

SECURE SUPPORT SITE

**QUARTERLY
TRAINING WEBINARS**



About Accelerated Technology Laboratories

Founded in 1994, Accelerated Technology Laboratories, Inc. launched the first commercially-available Windows-based Laboratory Information Management System (LIMS) powered by database engines including Microsoft SQL Server and SQL Express*.

Today, Sample Master® is installed in hundreds of laboratories with thousands of users around the world. ATL software has provided software solutions for Fortune 500 companies and to a variety of industries including water & wastewater, analytical, energy (coal, electrical, nuclear), environmental, food & beverage, chemical, government,

public health, industrial hygiene, biotechnology, forensics, clinical testing and manufacturing, and many others.

We hold a strong commitment to quality and invest heavily in research and development to provide our customers with the best available technology and tools. We hire experts — in the fields of chemistry, water & wastewater, microbiology, medical technology, laboratory management, validation, software development, computer science, engineering, and business — who hold various degrees ranging from A.S., B.S, M.S., and PhD.

Sample Master® is the easiest LIMS to use and deploy; unlike systems that require teams of programmers and years to implement, ATL clients are typically live within 4-6 months depending on the number of instruments to be integrated, users to be trained, and level of configuration required.

ATL provides superior pre- and post-sales support and dedicated training. All software is backed by a comprehensive world-class support plan, and customers with GOLD or PLATINUM plans benefit from a dedicated Account Manager, a live Support Engineer, free product upgrades and more.

In addition to on-site and web-based training, LIMS Boot Camp courses are held biannually to train end users

one-on-one with certified instructors. ATL is also dedicated to keeping customers informed of industry news by publishing a quarterly newsletter.

Whether automating data management and reporting or replacing an existing system, ATL will work with you closely to develop and execute a sound implementation plan. We will install your data management software, train your database administrator and users on the features and functions of the system, and provide long-term comprehensive support on all levels.

Improve laboratory data management processes and increase productivity and profit with Sample Master® LIMS. To determine the most suitable solution for your laboratory, please contact an ATL representative today!

Sample ID	Sample Name	Result	Entered Date
1000001	Water by CHA	21	5/21/2011 4:39:54 PM
1000002	Water by CHA	11	5/21/2011 4:39:54 PM
1000003	Water by CHA	95	6/14/2011 1:58:15 PM
1000004	Water by CHA	10.8	6/10/2011 6:10:51 PM
1000005	Water by CHA	3.9	6/14/2011 1:40:52 PM
1000006	Water by CHA	11.1	6/14/2011 1:40:52 PM
1000007	Water by CHA	16.1	6/17/2011 2:13:51 PM
1000008	Water by CHA	15.143	6/17/2011 2:13:51 PM
1000009	Water by CHA	49.85	6/20/2011 10:16:39 AM
1000010	Water by CHA	2.2	6/20/2011 11:24:30 AM
1000011	Water by CHA	2.2	6/20/2011 11:24:30 AM
1000012	Water by CHA	2.3	6/15/2011 11:24:30 AM
1000013	Water by CHA	2.3	6/15/2011 11:24:30 AM
1000014	Water by CHA	2.3	6/15/2011 11:24:30 AM
1000015	Water by CHA	2.3	6/15/2011 11:24:30 AM
1000016	Water by CHA	2.3	6/15/2011 11:24:30 AM
1000017	Water by CHA	2.3	6/15/2011 11:24:30 AM
1000018	Water by CHA	2.3	6/15/2011 11:24:30 AM
1000019	Water by CHA	2.3	6/15/2011 11:24:30 AM
1000020	Water by CHA	2.3	6/15/2011 11:24:30 AM
1000021	Water by CHA	2.3	6/15/2011 11:24:30 AM
1000022	Water by CHA	2.3	6/15/2011 11:24:30 AM
1000023	Water by CHA	2.3	6/15/2011 11:24:30 AM
1000024	Water by CHA	2.3	6/15/2011 11:24:30 AM
1000025	Water by CHA	2.3	6/15/2011 11:24:30 AM
1000026	Water by CHA	2.3	6/15/2011 11:24:30 AM
1000027	Water by CHA	2.3	6/15/2011 11:24:30 AM
1000028	Water by CHA	2.3	6/15/2011 11:24:30 AM
1000029	Water by CHA	2.3	6/15/2011 11:24:30 AM
1000030	Water by CHA	2.3	6/15/2011 11:24:30 AM